



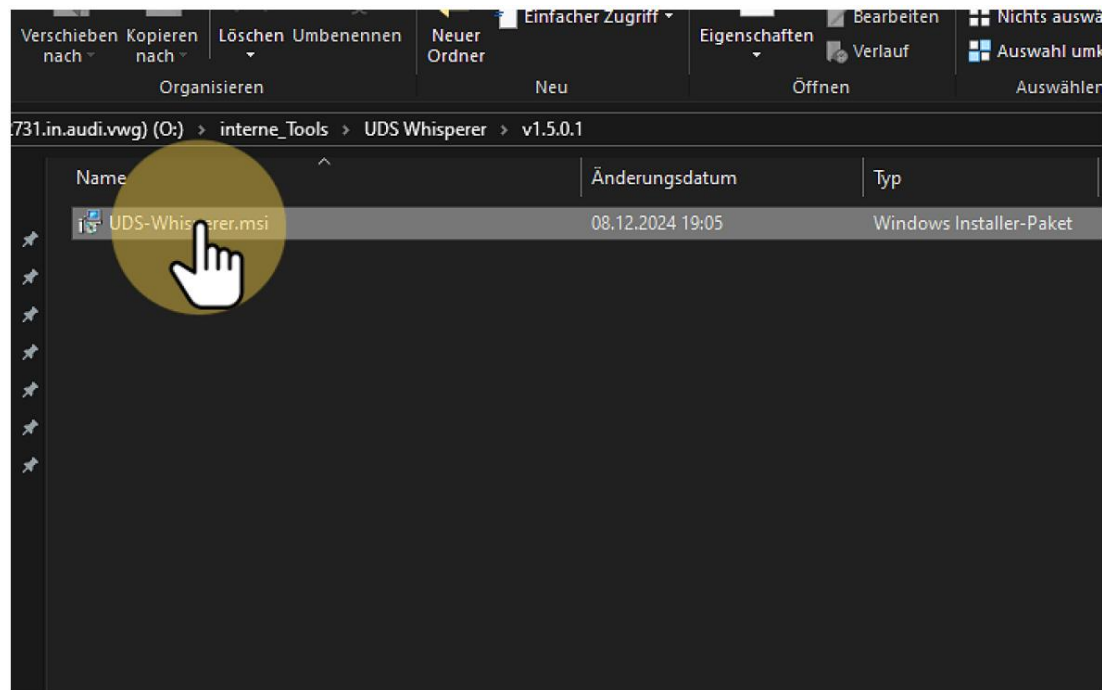
SOLUTION OVERVIEW

Setting up UDS Whisperer with Diagnostic Software (DPDU-API)





Run the installer

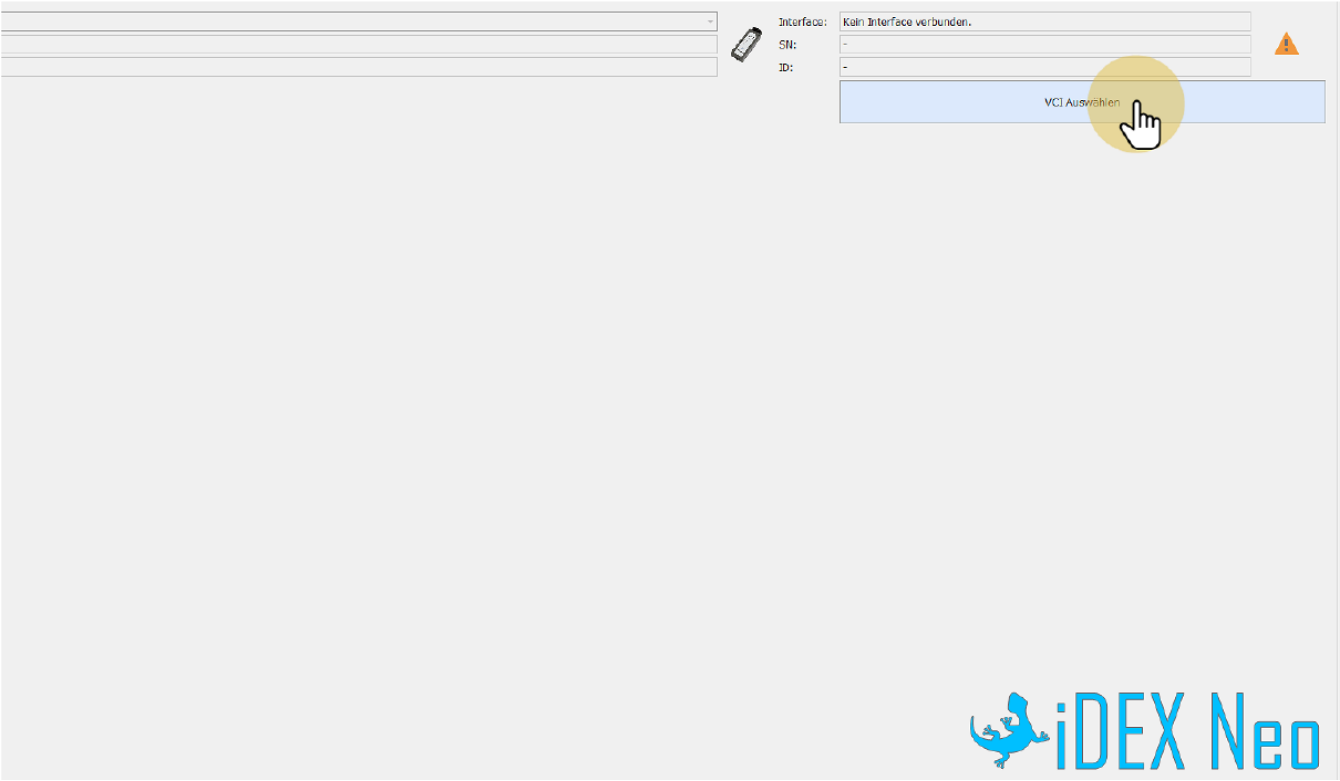


Check and accept the terms of the license agreement to install the DPDU-DLL



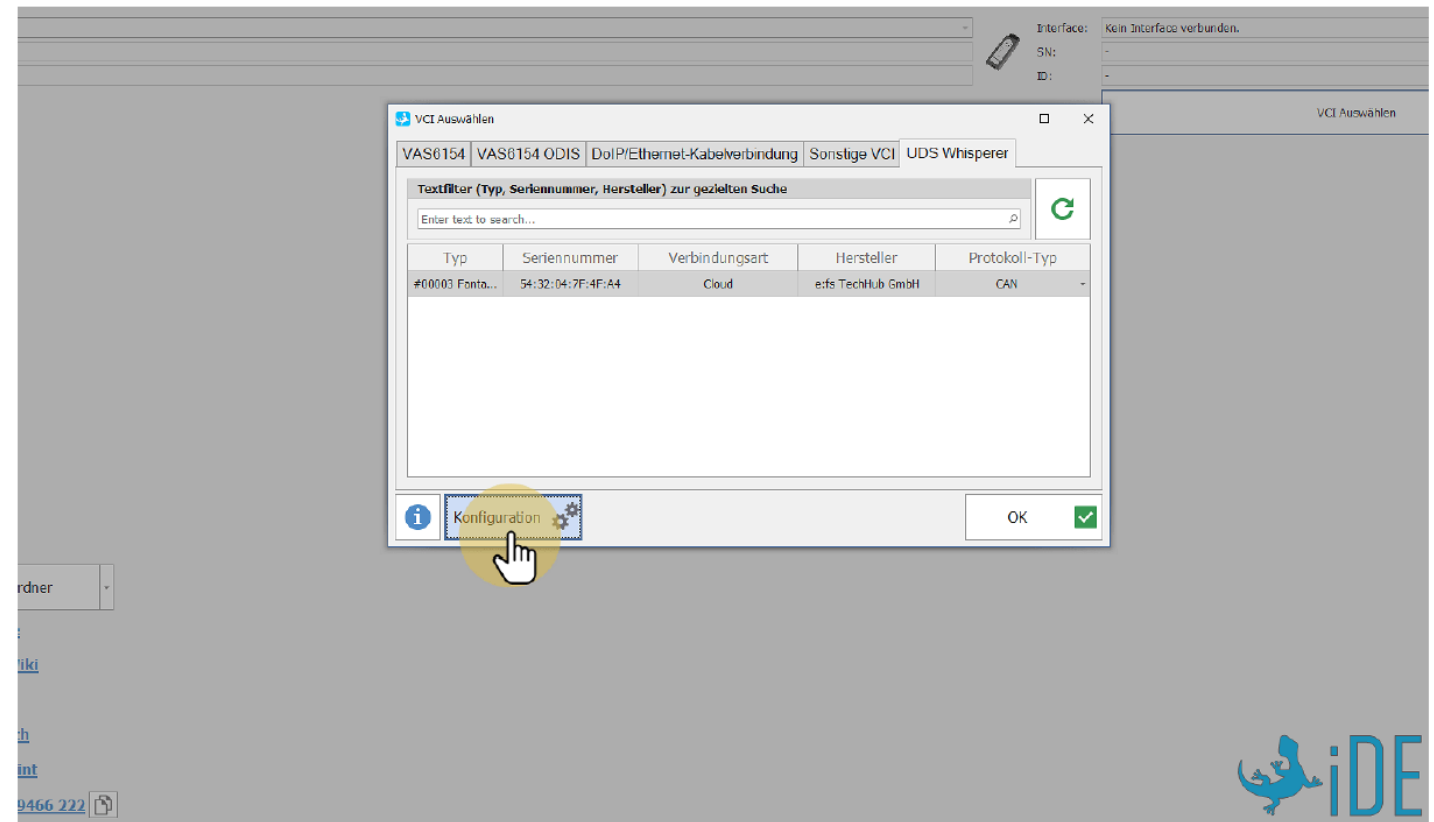


Integration (iDEX)





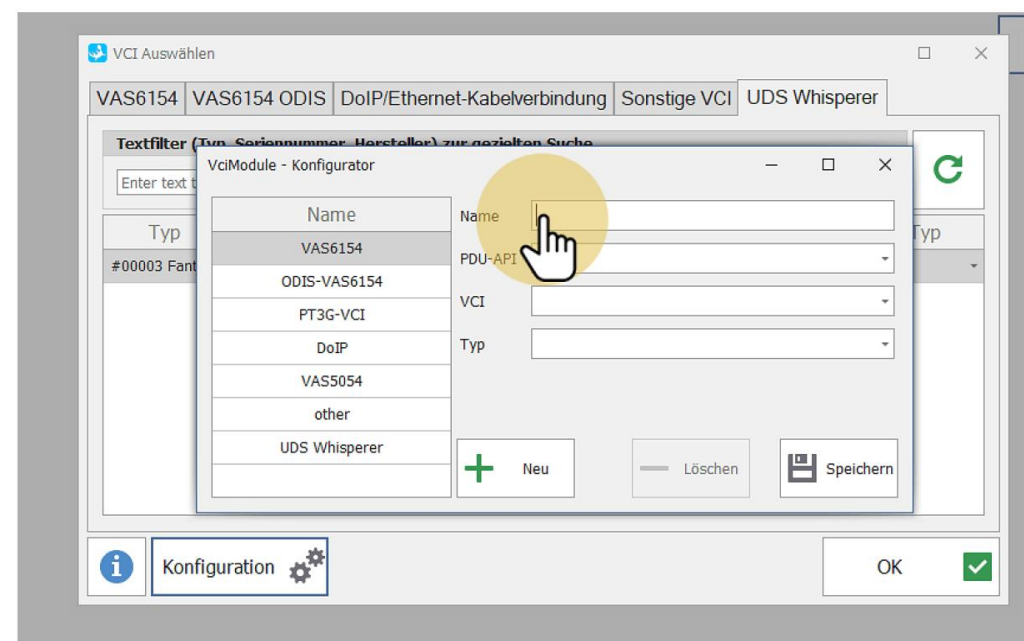
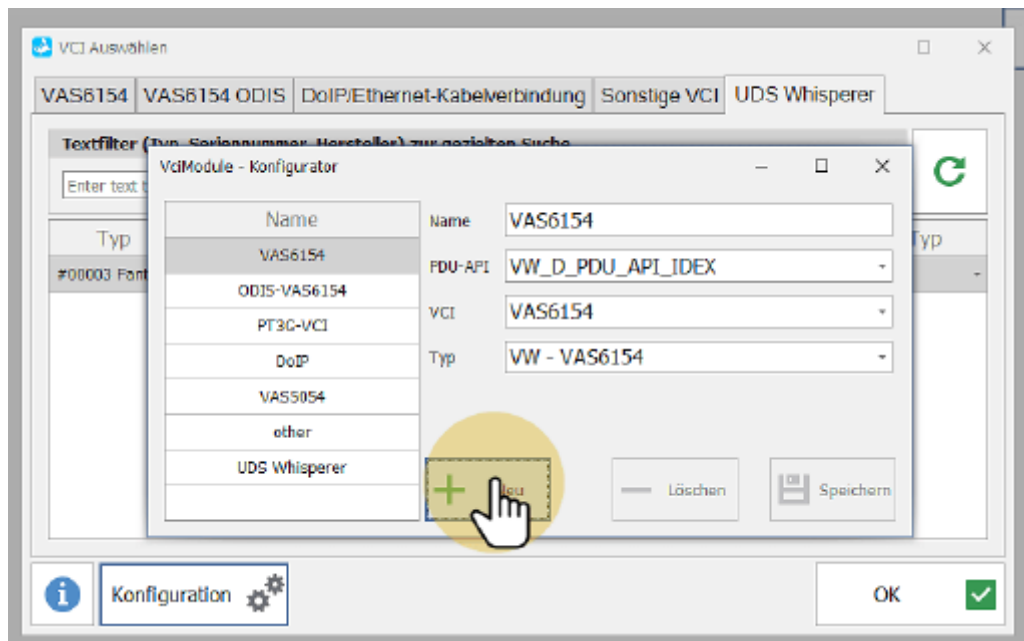
Integration (iDEX)



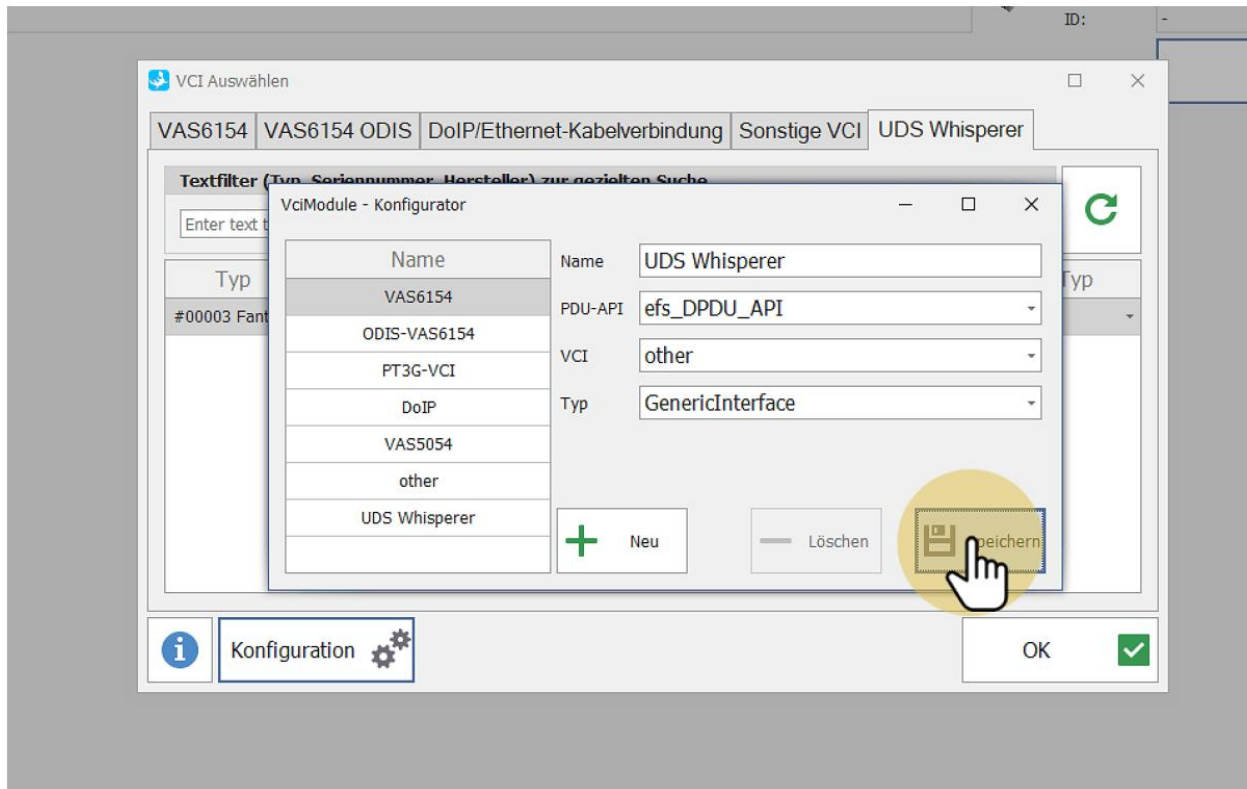
Note: The UDS Whisperer tab will only appear after the correct configuration



Integration (iDEX)



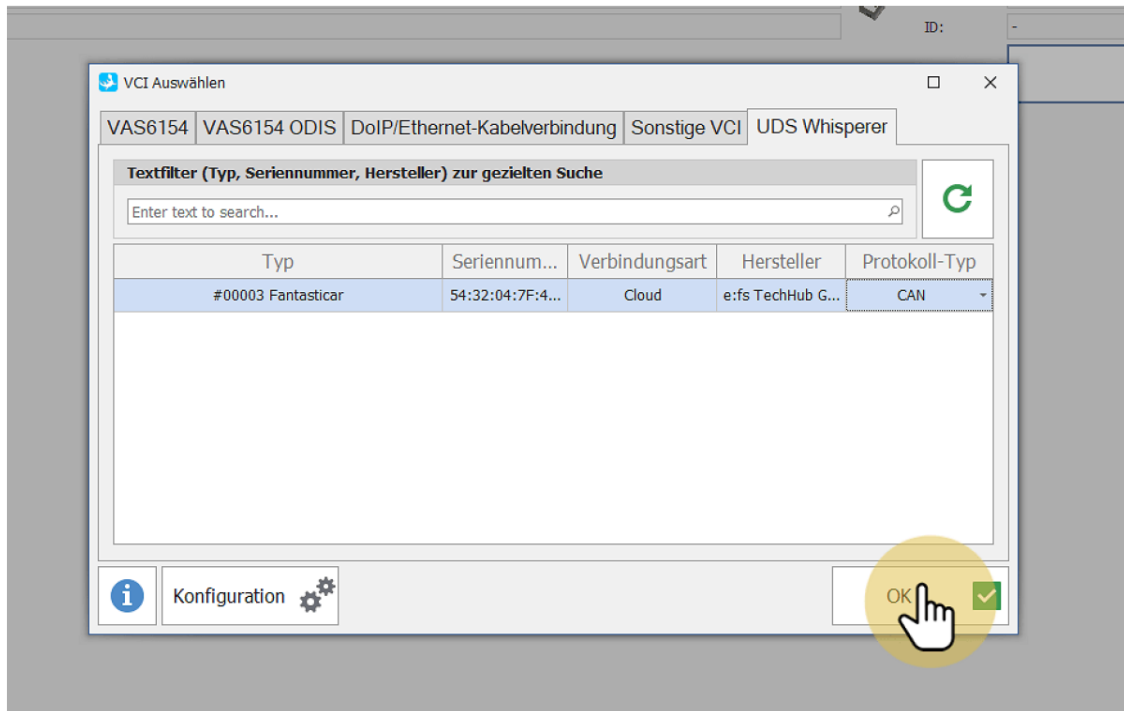
Integration (iDEX)



- Set Name of the integration (here UDS Whisperer)
- Select PDU-API: **efs_DPDU_API**
- Select VCI: **Other**
- Select Type: **GenericInterface**



Integration (iDEX)



- Select the device you want to connect to
- Confirm with OK